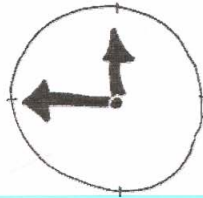


Times you can contact us:



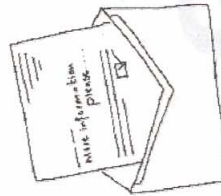
Monday to Friday

Mon	Tues	Weds	Thurs	Fri	Sat	Sun
√	√	√	√	√	X	X

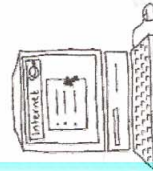
9.00 am to 5.00pm



Tel: 024 7624 6027



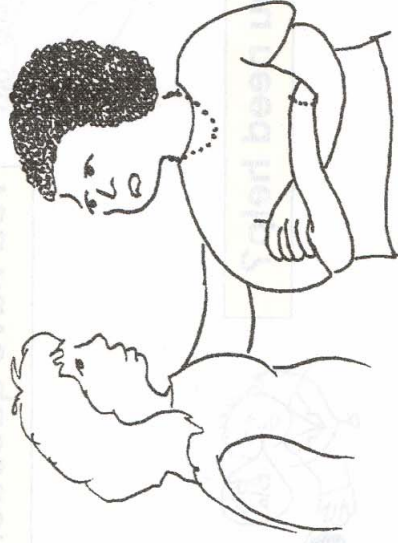
Patient Advice & Liaison Service  
(PALS)  
Coventry Teaching Primary Care Trust  
2nd Floor, Christchurch House  
Greyfriars Lane  
Coventry  
CV1 2GQ



E-mail: [debbie.moore@coventrypct.nhs.uk](mailto:debbie.moore@coventrypct.nhs.uk)  
[suman.ghaiwal@coventrypct.nhs.uk](mailto:suman.ghaiwal@coventrypct.nhs.uk)

Coventry **NHS**  
Teaching Primary Care Trust

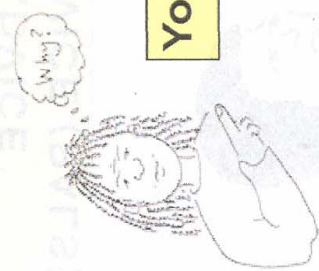
**PATIENT ADVICE  
& LIAISON SERVICE (PALS)**



**We're here to help...  
When you need advice  
about health services**

**PALS can help when:**

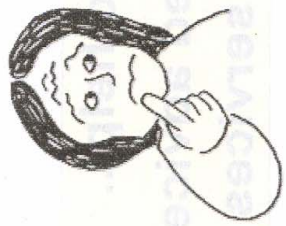
**You have questions...**



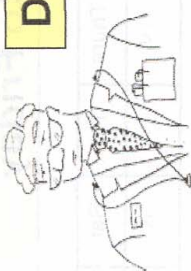
**You need help?**



**You are worried...**



**About...**



**Doctors (GPs)**

**Dentists**



**Mental Health**



**Opticians...**



**...and other NHS health services**

E-mail: [debbie.moore@coventryhpa.nhs.uk](mailto:debbie.moore@coventryhpa.nhs.uk)